



Paola Marini

Born in Torino (Italy) January the 11th 1958.

Academic career

Since 2018 Associate Professor in the scientific sector ING/IND 29 RAW Material Engineering at the Politecnico di Torino.

2001- 20018 Research assistant at the Environmental Land and Infrastructure Engineering Department - Politecnico di Torino

Responsible for the of Raw material Engineering Laboratory of the Environmental Land and Infrastructure Engineering Department - Politecnico di Torino.

1997-2001 Graduate technician at Marble and Natural Stone Laboratory of Politecnico di Torino

1995 PhD in Underground Resources Engineering at the Politecnico di Torino.

1982 Degree in Geology at the Faculty of Mathematical, Physical and Chemical University of Turin, 1982.

Teaching activity

Lecturer in the courses "Industrial Minerals and ornamental stones", "Recovery of Secondary Raw Materials" and "Petrography Technique", currently teaching the course "Raw and waste material engineering".

Research interests and Laboratory activities

Technological characterization of ornamental rocks and aggregates (physical mechanical characterization tests of stone material, durability of ornamental rocks; recognition and restoration of stone materials), mineral processing , the identification of minerals and asbestos in particular, and the processes of recovery of secondary raw materials.

Thanks to the equipment of four laboratories investigations are carried out under contracts with public and private partners, and test on the stone materials and aggregates as well as technological and durability, magnetic separation tests in fluid medium, gravimetric, comminution etc. differential perspective of recovery of raw and auxiliary materials, and analysis for the recognition of asbestos fibers in artefacts, soil and rock.

The advanced research activity is based on the large-scale equipment available on LAM such as SEM, Microraman, XRD, MOCF.

European projects: TEAM, MCDUR, OSNET, EASE R3.

Other projects: OSMATER, Ti-pot, Diadi, Remuck

Technical expert at the WG2 and WG3 of CEN TC 246 Natural Stones and at the WG2 of CEN TC 178.

Politecnico di Torino – DIATI

Corso Duca degli Abruzzi, 24 – 10129 Torino Italia

tel: +39 011 0907625 fax: +39 011 0907699

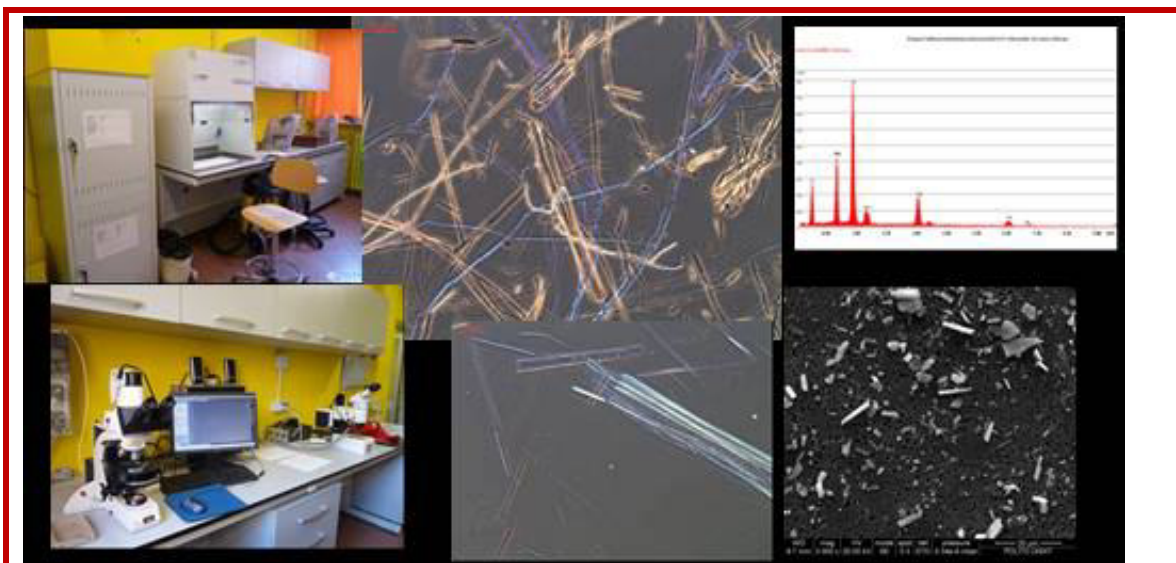
e-mail: paola.marini@polito.it url: <http://areeweb.polito.it/rawmaterials/>



Bowing of marble slabs – Stones durability - Geoheritage



Mineral and waste characterization and treatment



Asbestos in nature and in artefacts

Politecnico di Torino – DIATI

Corso Duca degli Abruzzi, 24 – 10129 Torino Italia

tel: +39 011 0907625 fax: +39 011 0907699

e-mail: paola.marini@polito.it url: [www. http://areeweb.polito.it/rawmaterials/](http://areeweb.polito.it/rawmaterials/)